

Warehouse¹

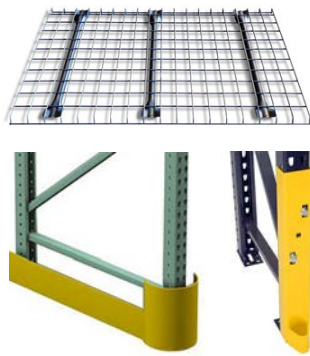
35+ Years Strong. 100% Employee Owned.

EXCLUSIVE DEALER PRICING

★ WH1 - A Premier Stocking Distributor ★



New & Used
Pallet Rack



Pallet Rack
Accessories



Cantilever
Rack



Flex & Gravity
Conveyors



Shelving
& More!



Automation Solutions



National Liquidations



Fabrication Shop

Get a Quick Quote for Fast Fulfillment

★ Contact Us at Sales@WH1.com ★



QUICK SHIP PALLET RACK



**NEW IN STOCK
QUICK SHIP
PALLET RACK**

New Teardrop Uprights In Stock

24"D x 96"H, 42"D x 120"H, 42"D x 144"H, 42"D x 192"H,
42"D x 240"H, 48"D x 144"H, 48"D x 192"H

Thousands of Used Uprights In Stock

New Wire Decking In Stock

24"D x 46"W, 36"D x 46"W, 42"D x 46"W, 42"D x 58"W,
44"D x 46"W, 48"D x 46"W, 48"D x 58"W

Tens of Thousands of Used Wire Decks In Stock

New Teardrop Beams In Stock

48"L - 6000 lbs., 96"L - 5000 lbs., 108"L - 5000 lbs.,
120"L - 5000 lbs., 144"L - 7000 lbs.

Tens of Thousands of Used Beams In Stock

Pallet Rack Accessories

Column Guards Pallet Supports M-Dividers
End of Aisle Guards Row Spacers J-Locks

Thousands of Used Accessories In Stock



New Teardrop Uprights



New Teardrop Beams



New Wire Decking

USED PALLET RACK



HUGE
SELECTION OF
USED PALLET
RACK IN STOCK

Common Sizes

Upright Depths: 24" to 72"

Upright Heights: 96" to 360"

Beam Lengths: 48" to 180"



Used Uprights



Used Beams



Reconditioned Beams



PALLET RACK ACCESSORIES



**End of Aisle
Protectors**
New & Used In Stock



M Dividers
New In Stock



**Frame Protectors -
Floor Mount**
New In Stock



Safety Netting



**Bolt-to-Column
Post Protectors**
New In Stock



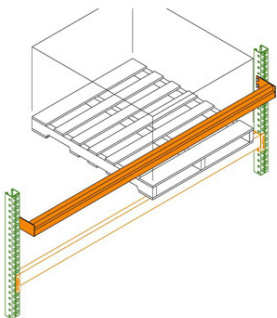
**Safety J-Locks for
Pallet Rack Beams**
New In Stock



**NFPA approved
Flue Keeper
Pallet Stop**
New In Stock



Pallet Jacks
New In Stock



**Loading Back
Stop Bars**
Used In Stock

Maximum Permissible Loads: **5,000** lbs.
(uniformly distributed per level)

WARNING:
Damage reduces rack capacity.
Repair or replace damaged components.

Warehouse1
Employee Owned | WH1.COM

Toll Free
(888) 941-7225

**WH1 Max-Capacity
Labels**
New In Stock

NEW & USED WIRE DECKING

TENS OF THOUSANDS IN STOCK - USED & NEW!

Wire deck protects against falling items that cause worker injury & product damage.

- Promotes safety
- Easy installation & maintenance
- Improves air circulation
- Increases overhead sprinkler effectiveness
- Meets fire code standards

Common wire deck sizes:

- Depth: 24" to 72"
- Width: 46" to 58"
- 3-4 support channels per deck configuration

Wire Deck Style Options



Waterfall Style



Drop-In Style



Universal Style



New Wire Deck



Wire Dividers



Used Wire Deck

PALLET RACK SYSTEMS



Used and Reconditioned High Density Rack



Drive-in Rack

High Density Last In, First out Management System

Increased Storage Density
Drive-In pallet rack systems are a cost effective solution to high-density storage needs.



Pushback Rack

High Density Last In, First Out per lane Management System

Push Back Pallet Rack uses a dynamic cart-on-rail system in which deeper pallet loads automatically advance to the aisle when the front pallet load is retrieved.



Pallet Flow Rack

High Density First In, First Out Management System

Pallet Flow Rack Systems are ideal for supplying pallet or carton loads of common SKUs in sorting and distribution operations. Gravity flow pallet racks act like a conveyor within a rack structure

High Density Storage / Freezer Rack Applications

CANTILEVER RACK

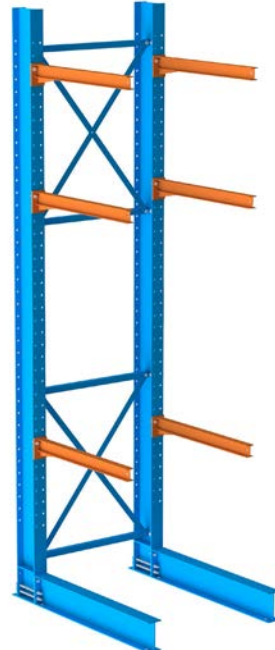


Cantilever Rack In Stock

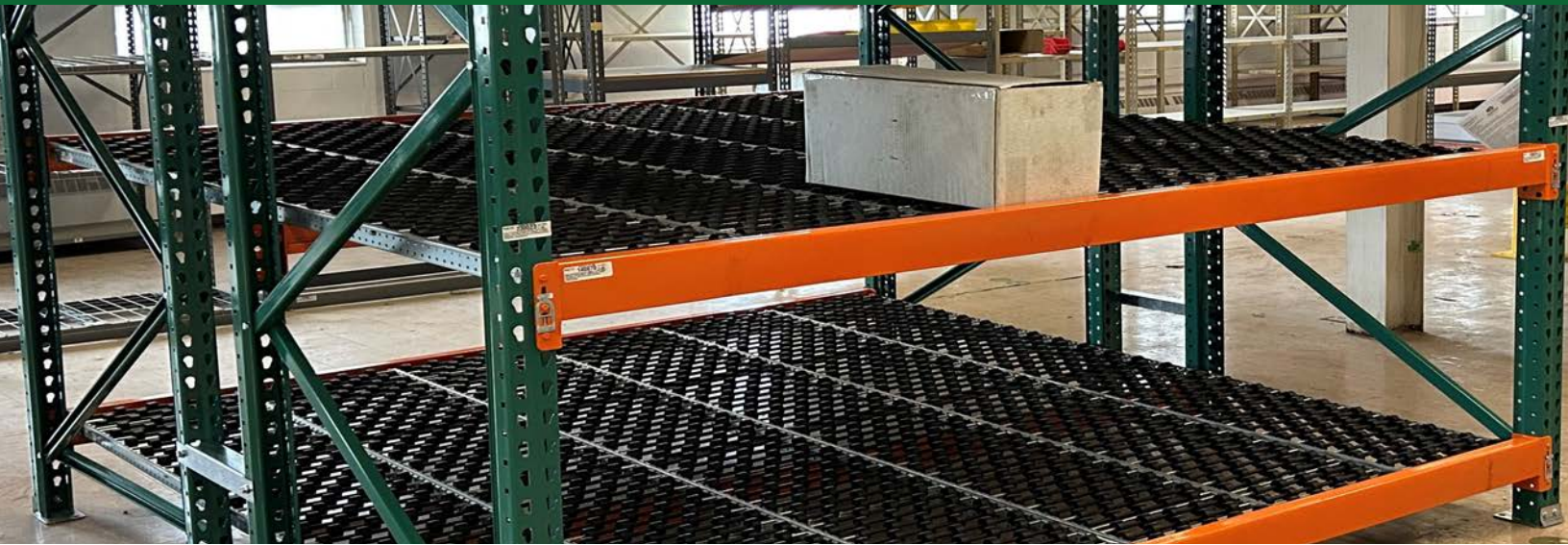
Provide flexible storage and easy access to your non-pallet-sized material such as lumber, pipe, tubing, steel bars and furniture. The absence of a front column makes these racks faster and easier to load and unload with forklifts than selective pallet racks, lowering your handling time and costs.

Structural Cantilever Rack / Pipe Rack / Lumber Rack

New structural cantilever racking is made from thick-gauged structural steel which makes it very resistant to damage and gives it heavy-duty capacities.



FLOW RACK



Gravity flow rack, also known as carton or case flow rack, is a great solution for creating the most efficient system for stocking and picking.



Carton Flow

Used in stock or ships new from the factory

Single row carton flow racking, loaded from the rear, allows for automatic first in, first out inventory flow. Large stock of used available



Roller Track

Thousands used in stock or ships new from the factory

Roller track easily installs on your existing pallet rack, converting static pallet storage into a high capacity flow system.



Flex Track

Ships new from the factory

Flex track carton flow bed systems are compatible with all existing flow rack systems with step or structural pallet rack beams.

SHELVING

Open Shelving
Used In Stock



Wide Span Bulk Rack
Used In Stock



Closed Shelving
Used In Stock



Record Shelving
Used In Stock

Boltless Rivet Shelving
Used & New In Stock



Bin Shelving
Used In Stock



Hand Stack Teardrop Pallet Rack
Used In Stock



Wire Shelving
Used In Stock

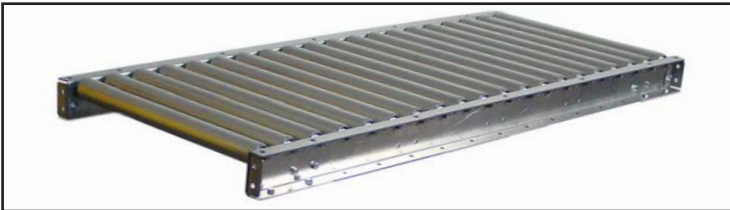


CONVEYORS



**USED
CONVEYOR
IN STOCK**

Conveyors transport materials & products, which can increase facility efficiency & safety



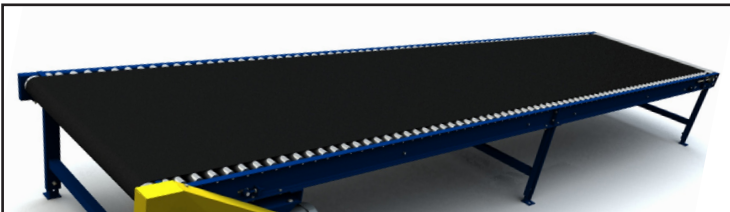
Gravity Conveyors

Gravity conveyors generally use either rollers or skate wheels to harness the power of gravity to assist in the travel of containers even when there is no power source around.



Gravity Flex Conveyors

Gravity flex conveyors contract and expand to provide easy transportation and compact storage. They're also ideal for loading and unloading in multiple locations.



Power Conveyors

Powered conveyors use a motor and have a wider variety of conveyor surfaces than gravity conveyors. Many styles available.



Power Flex Conveyors

Powered flex conveyor has a robust design that provides optimal conveying power that can easily be moved where it is needed most. This flexible, expandable conveyor is ideal for truck loading and unloading areas.

INSTALLATION - DISMANTLING - RELOCATION



Certified Safety & Compliance Member Contractor

CHECK OUT OUR...

- CLOSEOUTS
- OVERSTOCK
- SPECIALS

SAVE BIG

BUY DIRECT FROM OUR
USED LIQUIDATION SITES

LAYOUT & DESIGN

ENGINEERED
STAMPED DRAWINGS

PERMITS

ASK ABOUT FINANCING

PROJECT MANAGEMENT
FACILITY SURVEYS
LIQUIDATION SERVICE

Warehouse1

About Warehouse1

Since our founding in 1988, Warehouse1 has been a trusted provider of material handling solutions, serving a wide variety of industries across the United States. As a 100% employee-owned small business based in Kansas City, Missouri, we pride ourselves on delivering exceptional value and service. While we can ship to regional markets near us within 72 hours, our operations extend nationwide, ensuring timely and reliable solutions.

Why Partner with Warehouse1?

- **National Expertise, Local Focus**
Warehouse1 brings decades of experience and a network of highly trained specialists to solve the material handling challenges of clients nationwide.
- **Optimized Facility Utilization**
With technical expertise, we help clients maximize vertical space and square footage, optimizing both new and existing facilities.
- **Customized Solutions to Fit Your Needs**
From equipment sales to the design, installation, and management of moving and storage systems, our solutions are tailored to your specific objectives.
- **Cost-Effective Integration**
We specialize in blending new and reconditioned products into the current infrastructure, providing competitive solutions without compromising quality.
- **Fast, Reliable Fulfillment**
With a central location, extensive in-stock inventory, and nationwide purchasing power, Warehouse1 can significantly reduce material lead times—often by weeks.

Your Trusted Partner for Material Handling

Our commitment to building strong relationships is the foundation of our success. At Warehouse1, we prioritize accountability, deliver measurable results, and strive to exceed your expectations. Partner with us to empower your indirect sales channel with reliable, efficient, and innovative material handling solutions.

Warehouse One Inc.
7800 E 12th Street
Kansas City, MO 64126

844.656.8644
Sales@Wh1.com
www.Wh1.com